

Welcome



Building a School in Zambia



Presented by "Exilda's Angels"
February 17, 2023
Exning Community Church Hall



Welcome



**How would you feel if your
children, grandchildren,
or neighbour's children
had to walk 5 km to school
every day?**

Welcome



- For pupils at Exning Primary School that would mean walking from the Reach or the top of Warren Hill.
- That was what children in the village of Chita in Zambia were faced with before their village had a school of its own



Welcome



Building a School in Zambia



Presented by "Exilda's Angels"
February 17, 2023
Exning Community Church Hall

Welcome



The Story of Chita Village Primary School





Agenda



- Geography
- Background
- Funding the school
- Building the school
- Opening the school
- On-going links

- Challenge of growth
- Phase Ia Plans – Extra Classrooms
- Future Plans Secondary School
- Q&A

Introduction



- “Exilda” is Exilda Mungulube who was a resident of Chita village in Zambia where the school has been built
- Her mother donated the original parcel of land upon which the school is built.
- The “Angels”? They are all those who work to raise funds.
- *The term “business angel” is thought to have its origins in New York’s Broadway musical scene. Producers who wanted to launch a new show would receive investment funding from wealthy “up-town” patrons of the theatre. Since then “Angel” has come to mean those who financially support a new venture.*



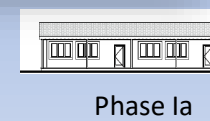
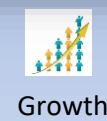
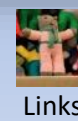
Agenda



- Geography
 - Background
 - Funding the school
 - Building the school
 - Opening the school
 - On-going links
-
- Challenge of growth
 - Phase Ia Plans – Extra Classrooms
 - Future Plans – Secondary School
 - Q&A



Geography



Agenda



- Geography
- **Background**
- Funding the school
- Building the school
- Opening the school
- On-going links
- Challenge of growth
- Phase Ia Plans – Extra Classrooms
- Future Plans – Secondary School
- Q&A



Geography



Background



Funding



Building



Opening



Links



Growth



Phase Ia



Future

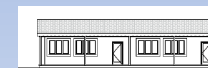


Q&A

Background & History

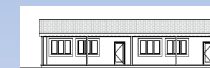


- The charity was originally founded in partnership with the UK registered charity "Lloyd's Register".
- As a non profit organisation "Lloyd's Register" encouraged it's employees to develop worldwide charity and community projects in 2010 to celebrate its 250 year service, the "LR250" Campaign
- Exilda, with a group of other Lloyds employees, proposed funding for a school
- Exilda's Angels was one of 43 charities chosen
- The Lloyd's involvement was "pump priming" as all the projects were meant to be on-going



Water

- As well as education there is a need for clean water
- Bore holes and water pumps provided for the village in 2008 by Exilda
- Only source of pure water
- Each bore hole and pump cost approximately £3,500
- Children often drop out of school because of family need to fetch water





School



- Lloyds provided initial funds
- Supplemented by fund raising individuals/ groups
- Zambian Department of Education gave standard school drawings
- Some local skilled workers were paid (e.g. groundworks)
- The Chita Village Community provided the unskilled labour



Agenda



- Geography
 - Background
 - **Funding the school**
 - Building the school
 - Opening the school
 - On-going links
-
- Challenge of growth
 - Phase Ia Plans – Extra Classrooms
 - Future Plans – Secondary School
 - Q&A



Geography



Background



Funding



Building



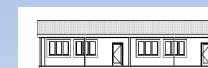
Opening



Links



Growth



Phase Ia



Future



14

Fund Raising Motorcycle Challenge



Exilda's Angels motorcycle challenge



Winging it to Zambia, as part of the LR250 campaign, 'Exilda's Angels' aim to build a school in Mpika, Zambia.

Exilda's Angels is a project supported by Lloyd's Register EMEA as part of its 250th anniversary campaign. The project is building a primary school near Mpika, Zambia for the local children of Chita's village.

The 140 primary school children in Chita village and the neighbouring villages currently have to walk 5km each way to the nearest school. Due to this most children do not start school until aged seven. Providing a primary school in Chita will enable more children in the community to receive education from the age of six. In the long term this will improve the standard of living for the community as a child's basic education enables progression.

The Motorcycle challenge will ride 7000Km from Durban to the village and back to raise vital funds for the construction. The bikers hope to reach Chita Village by June 15, where they will spend a few days assisting to build the school. All donations will be gratefully received towards the construction of the school.



Fund Raising Marathons



- Alan Shand runs marathons And he did so to raise funds for the school
- 2005-2010, various national & international marathons including London, Paris, Berlin, New York, Athens, Helsinki,
- In 2011 and beyond progressed to to ultra's ("double marathons") such as
 - Comrades 56 milers,
 - Norfolk 100k,
 - SVP 100k,
 - Hadrians Wall 78 miler,
- in 2014 L2B and UTMB in Chamonix which was a DNF.



Fund Raising Knit & Natter



- Knit & Natter is a group which meets in the village of Exning, near Newmarket in Suffolk. As the name suggests, they meet to knit together....and have a chat.
- Some of the “teddies” they have knitted have been sold at various events to raise funds for Exilda’s Angels.
- They have also sent teddies as presents for the pupils at Chita Primary School.



Agenda



- Geography
 - Background
 - Funding the school
 - **Building the school**
 - Opening the school
 - On-going links
-
- Challenge of growth
 - Phase Ia Plans – Extra Classrooms
 - Future Plans – Secondary School
 - Q&A



Geography



Background



Funding



Building



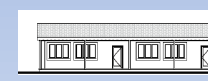
Opening



Links



Growth



Phase Ia



Future



Q&A

Building the School



Chita Village Community
preparing to build



Geography



Background



Funding



Building



Opening



Links



Growth



Phase 1a



Future



19

Building the School



Project manager Sam Simwanger starts the build



Geography



Background



Funding



Building



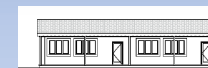
Opening



Links



Growth



Phase 1a



Future



Q&A

20

Building the School



Preparing the slab



Geography



Background



Funding



Building



Opening



Links



Growth



Phase 1a



Future



Q&A

21

Building the School



Chita Village community at build



Geography



Background



Funding



Building



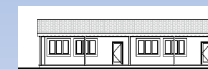
Opening



Links



Growth



Phase 1a



Future



Q&A

Building the School



The walls go up



Geography



Background



Funding



Building



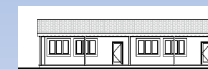
Opening



Links



Growth



Phase 1a



Future



Q&A

Building the School



Brickwork
complete



Geography



Background



Funding



Building



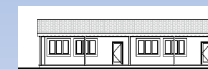
Opening



Links



Growth



Phase 1a



Future



Q&A

Building the School



The roof goes on



Geography



Background



Funding



Building



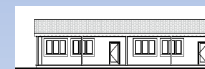
Opening



Links



Growth



Phase Ia



Future



Q&A

Building the School



The windows and doors were coming



Geography



Background



Funding



Building



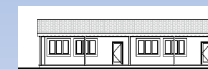
Opening



Links



Growth



Phase Ia



Future



Q&A

26

Building the School



Decorated and complete



Geography



Background



Funding



Building



Opening



Links



Growth



Phase Ia



Future

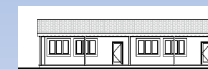


Q&A

Building the School



- The school has 3 classrooms
- 2 offices
- 2 secure store rooms



Agenda



- Geography
 - Background
 - Funding the school
 - Building the school
 - **Opening the school**
 - On-going links
-
- Challenge of growth
 - Phase Ia Plans – Extra Classrooms
 - Future Plans – Secondary School
 - Q&A



Geography



Background



Funding



Building



Opening



Links



Growth



Phase Ia



Future

Q&A

Opening the School



The school was officially opened on June 13, 2014



Geography



Background



Funding



Building



Opening



Links



Growth



Phase Ia



Future



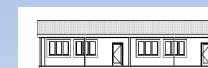
Q&A

30

Opening the School



- The Guest of Honour, Sir, (Mr. Jobbick Kalumba, the –provincial education officer),
- His Royal Highness, Chief Chikwanda, Kafula Musungu II,
- The District commissioner, Mpika District,
- The District education board secretary, Mpika (Mr. Christopher –Sinkamba),
- The council secretary Mpika district,
- The officer incharge, Zambia police service, Mpika,
- The commanding officer, ZNS- Mpika,
- All the heads of government departments and –institutions present,
- All priest present,
- The area councilor, (chishibe sonde ward – Mr. Edward Mulenga,
- The zonal Head Teacher, Kabale Zone- Mr. Clement Mumbo,
- The Head teachers and teachers present,



Opening the School



Remarks by the Headteacher

“Teaching and learning began on the 8th of October, 2012, with a total enrolment of 174 pupils form grades 1 to 4. These were directly off loaded from Chibansa primary school.

To date the school has 137 boys and 136 girls and 8 trained teachers employed by the Zambian government. The school is currently running from grades one to six.”



Opening the School



“The establishment of this school in this locality, has cheered and brought up immeasurable joy and happiness to all the parents and children from the surrounding villages, in that our children can now walk affordable distances to this school to access the much treasured quality education.

The parents and children of Chita community have seen this school being built and develop to its current status, this has instilled a strong sense of ownership and patriotism.”



Opening the School



Geography



Background



Funding



Building



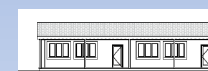
Opening



Links



Growth



Phase Ia



Future



Q&A

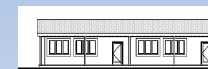
Opening the School



- The yellow school uniforms for each pupil and provided by the tribal chief



Opening the School



Opening the School



Geography



Background



Funding



Building



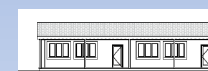
Opening



Links



Growth



Phase Ia



Future



Q&A

Opening the School



Geography



Background



Funding



Building



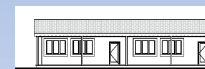
Opening



Links



Growth



Phase 1a



Future



Q&A

38

Opening the School



Geography



Background



Funding



Building



Opening



Links



Growth



Phase 1a



Future



Q&A

39

Opening the School



Geography



Background



Funding



Building



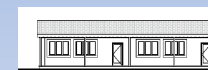
Opening



Links



Growth



Phase Ia



Future



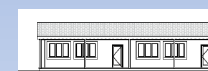
Q&A

40

Since the Opening



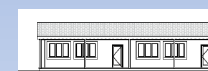
- In 2015 A 3 bedroom bungalow was built for the Head Teacher



Since the Opening



- In 2015 A house was built for the Head Teacher
- In 2017 On-site water and sanitation provided



Since the Opening Water & Sanitation



- Toilet facilities provided at the Primary School with 4 latrines for use by
 - Female Staff,
 - Male Staff,
 - Female Children, and
 - Male Children.

- A dedicated bore hole for supply of water for the Primary School was installed and made operational in 2017.
- This provides water at the pump.....but still has to be hand carried to the school building and latrines by the children.



Since the Opening

- In 2015 A house was built for the Head Teacher
- In 2017 On-site water and sanitation provided
- In 2022 a plaque was placed on the school recording those who contributed to building the school



Since the Opening



- In 2015 A house was built for the Head Teacher
- In 2017 On-site water and sanitation provided
- In 2022 a plaque was placed on the school recording those who contributed to building the school
- In November 2022 a foundation laying ceremony of new classrooms was held (*more about that later*)
- Plans are being made for a 10 year reunion for the original pupils in 2024



Agenda



- Geography
 - Background
 - Funding the school
 - Building the school
 - Opening the school
 - On-going links
-
- Challenge of growth
 - Phase Ia Plans – Extra Classrooms
 - Future Plans – Secondary School
 - Q&A



Geography



Background



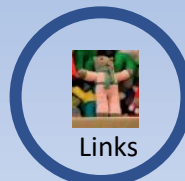
Funding



Building



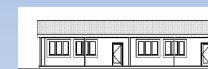
Opening



Links



Growth



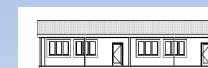
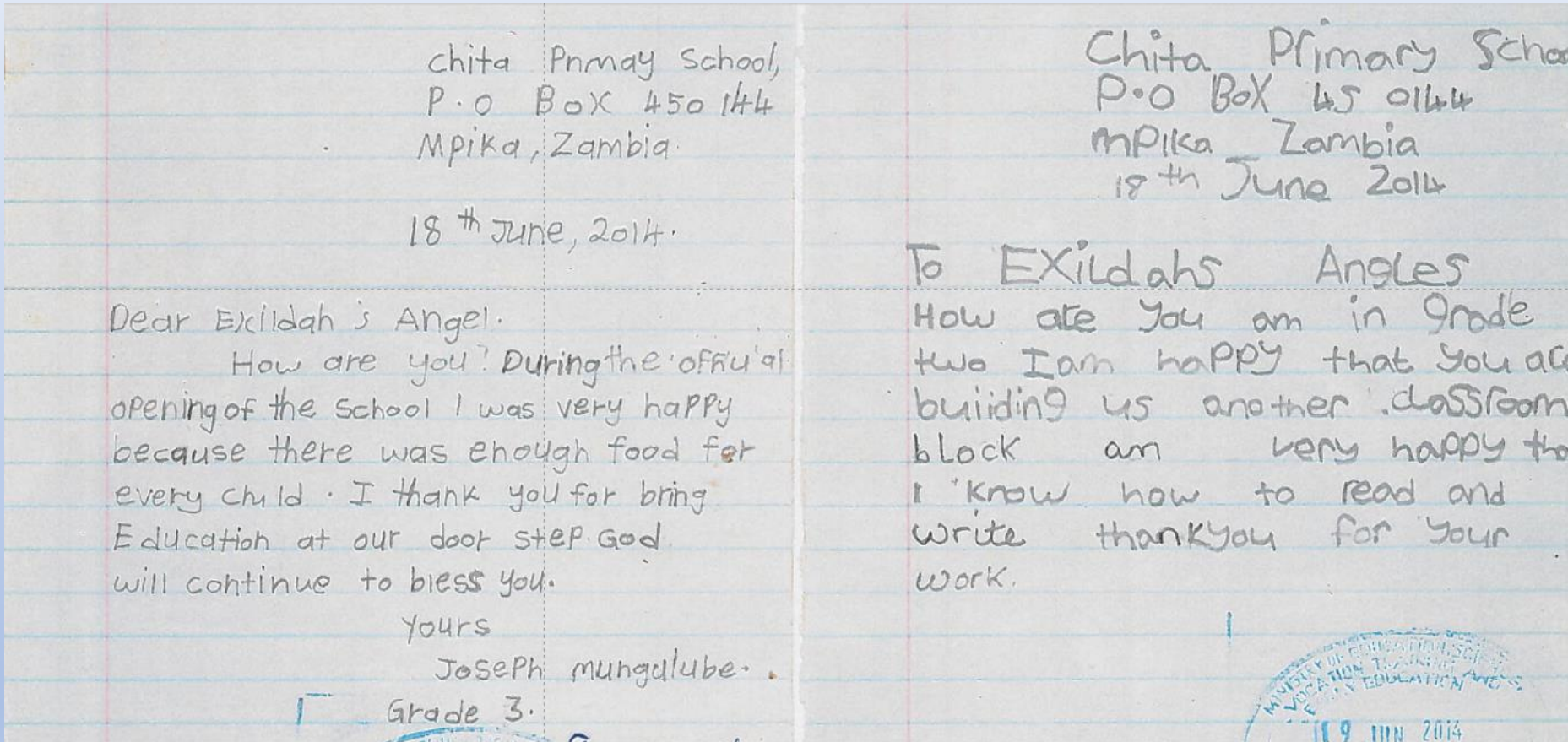
Phase Ia



Future

Q&A

On-going Links Letters



A green chalkboard with a wooden frame and a wooden stand. The text "On-going Links Visits" is written in white on the board.

On-going Links Visits



- Visits by members of Exilda's Angels team
- 2015, 2018 & 2022
- Funded personally by the visitors (no use of EA funds)
- Review progress
- Discuss future plans

A PRIMARY													
ONE 2017 RESULT ANALYSIS.													
MINIMUM (0-39%)		MINIMUM (40-59%)		DESIRABLE (60-79%)		OUTSTANDING (80-100%)		PASS %		FAIL %			
S	G	T	E	S	T	E	S	T	E	G	T		
0	0	0	0	0	0	0	0	0	0	0	0	5	
1	1	2	2	4	6	5	13	18	9	9	18	8	
4	2	6	4	4	8	6	5	11	13	9	22		
7	11	18	3	3	6	8	6	14	5	4	9		5
4	3	7	2	2	4	2	7	9	10	10	20		
1	1	2	8	6	14	8	9	17	13	7	20		
1	6	7	9	9	18	10	8	18	3	0	3		

School Results



On-going links Teddies



The Exning based "Knit & Natter" group has made and sent shipments of Teddies for all Year 1 children and these have been greatly appreciated



Geography



Background



Funding



Building



Opening



Links



Growth



Phase 1a



Future



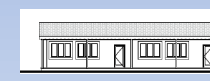
49

On-going links Dresses

Exning resident, Lillian, has made 100 dresses for the girls at the school. Each is "bespoke" based on measurements sent from the school



S/N	NAME	GRADE	CHEST SIZE	AVERAGE LENGTH
25	Chi	ina	4	28 - 30✓ 33
26	Mi	iet	4	26 - 28✓ 33
27	Ch	hena	4	24 - 26✓ 32
28	ko	ress	4	26 - 28✓ 34
29	Mi	ness	4	30 - 32✓ 36
30	M	lyn	4	26 - 28✓ 35
31	M	gret	4	26 - 28✓ 33
32	Mi	et	4	26 - 28✓ 31
33	Kc	ny	4	28 - 30✓ 35
34	M	et	4	28 - 30✓ 35



On-going links Dresses



Geography



Background



Funding



Building



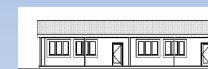
Opening



Links



Growth



Phase 1a



Future



Q&A

Agenda



- Geography
 - Background
 - Funding the school
 - Building the school
 - Opening the school
 - On-going links
-
- **Challenge of growth**
 - Phase Ia Plans – Extra Classrooms
 - Future Plans – Secondary School
 - Q&A



Geography



Background



Funding



Building



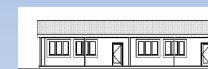
Opening



Links



Growth



Phase Ia



Future

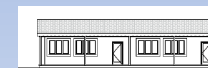
Q&A

Growth of pupils



- The original Primary school has been successful but there is a need to provide further accommodation so an extension next to the existing school is being planned.
- The nearest alternate school is over 5Km away
- Original building was designed for 100 children.
- In October 2012 when it started taking pupils there were 174
- At the Official opening in 2014 there were 273 pupils with 8 teachers
- Now ~~315~~ children enrolled
- 3 existing classrooms have to be used in “shifts”

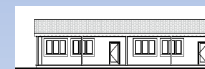
That was the number in 2018, in November 2022 it was 460



Growth of pupils



Chita Primary School Pupil Growth



Growth of pupils

The original 3 classroom building has been supplemented by 3 temporary classrooms made of "mud bricks".

Built by the tribal communities as a "stop gap" until additional proper classrooms can be built.



Growth of pupils



Geography



Background



Funding



Building



Opening



Links



Growth



Phase Ia



Future

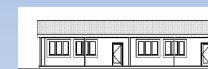


Q&A

Agenda



- Geography
 - Background
 - Funding the school
 - Building the school
 - Opening the school
 - On-going links
-
- Challenge of growth
 - **Phase Ia Plans – Extra Classrooms**
 - Future Plans – Secondary School
 - Q&A



Need for more classrooms



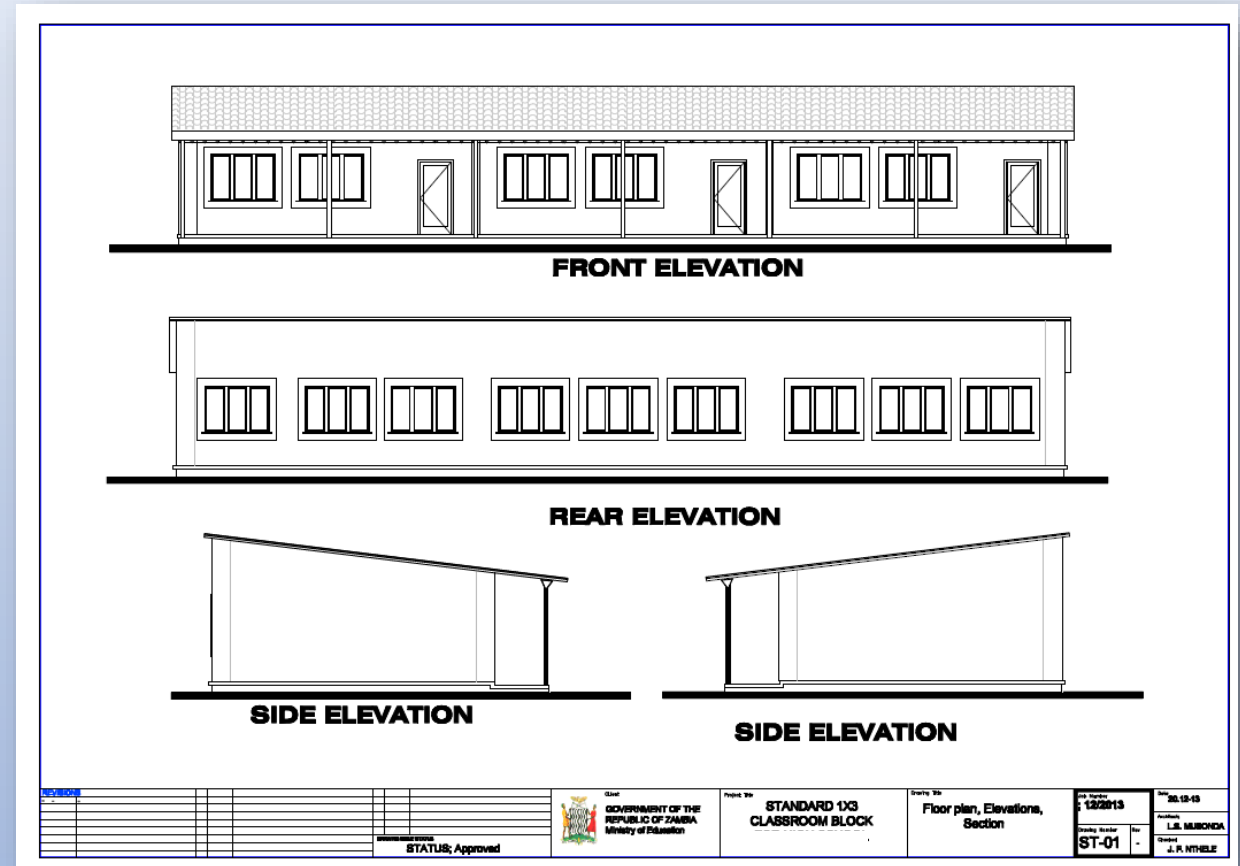
- We are currently planning to fund 2 more classrooms
- Recent Zambian government policy would require an IT room
- Need for Electricity
 - Lighting to extend school day
 - Enable IT
 - Opportunity to educate parents



Extension Current Status



- Plans have been issued by the
Zambian Education Authority
- Note these are for a 3 class
school but are also used for 2
class units



Extension Current Status

- Plans have been issued by the
Zambian Education Authority
- Material costs have been
obtained

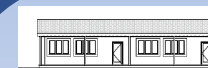
MINISTRY OF GENERAL EDUCATION
MATERIAL SCHEDULE FOR 1 x 2 CRB

S/N	MATERIAL DESCRIPTION	UNIT	QTY	UNITY COST	TOTAL
A	STRUCTURE				
1.	Ant-proofing	SLTS	5.	K700.00	K3,500.00
2.	Polythene sheet	ROLL	2.	K800.00	K1,600.00
3	Cement for foundation	Pkts	12.	K150.00	K1,800.00
4	blinding	Ton	5.	K500.00	K2,500.00
5	River sand	Ton	25.	K700.00	K17,500.00
6	Crushed Stones	Ton	40	K150.00	K6,000.00
7	Cement for foundation footing	Pkts	40	K150.00	K6,000.00
8	Latelite for hardCore	Ton	33	K600.00	K19,800.00
	Cement for foundation	Pkts	10	K150.00	K1,500.00



Extension Current Status

- Local project team has been established
- In process of appointing an on-site Project Manager
- Establishing a Zambian charity
 - That will enable opening of a Zambian Bank account
 - And possibly apply for grants from other governments
- Need to choose a builder for “professional” trades



Current funding position

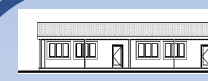


	£	Zambian Kwacha
Last quote	21,880	513,360
Available for Primary Extension	11,621	272,816
Funds needed	10,259	240,844

Based on bank accounts and exchange rates February 14, 2023

Issues

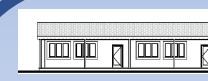
- In recent years Zambia has suffered from increased building costs
- Sensitive to exchange rate fluctuations of both £ and ZKW



Fund Raising Ultramarathons



- Since the opening of the school Alan has participated in a number of events to contribute funds to the next phase of buildings.



Fund Raising Ultramarathons



- Alan is taking to the “roads” again
- In 2024 he plans to run the Cape Wrath Ultra
- Scotland’s finest multi-stage ultra running event.
- Starting in Fort William and finishing at Cape Wrath
- That’s a 400km, 8-day journey
- As preparation for that, at the end of April 2023 he will run the Great Lakeland 3day event



Geography



Background



Funding



Building



Opening



Links



Growth



Phase Ia



Future



Fund Raising



- Applying to charities which support Education and/or African development
- Some Grant giving trusts may provide “match funding”.
- Fund Raising Activities e.g. Murder Mystery evening
- Opportunity for personal donations




How can you help?

- Exilda's Angels is a registered charity
- Company No# 07327468
- Charity No# 1141241
- Ideas for and/or help in running "fund raising activities"
- Individual donations
- Possibly "Buy a Brick" (or 100?)
- Just Giving page



JustGiving Menu Start Fundraising Search Log in Sign up



53%
£13,085
raised of £24,500 target
by 43 supporters

Give Now

Share

Alan Shand
Alan's Ultra's and beyond
Next phase, Secondary School where none exists for Exilda's Angels because The next natural progression for these children

Story
In 2014 a 1 x 3 classroom Primary School was opened in the Village of Chita in Zambia. This followed fundraising by a charity, Exilda's Angels, which provided materials, with construction labour provided by the local community. Then in 2015, the accompanying headteachers house

Supporters 43
2 days ago
Post Covid here we come, 2023 with new

Exilda's Angels
We Relieving poverty by providing Education to Develop and build a sustainable future
Charity Registration No. 1141241



Geography



Background



Funding



Building



Opening



Links



Growth



Phase Ia



Future



66

Agenda



- Geography
 - Background
 - Funding the school
 - Building the school
 - Opening the school
 - On-going links
-
- Challenge of growth
 - Phase Ia Plans – Extra Classrooms
 - **Future Plans – Secondary School**
 - Q&A



Geography



Background



Funding



Building



Opening



Links



Growth



Phase Ia



Future



Future Plans Secondary School

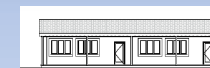
- What happens to children's education when they reach Secondary school age?
- Nearest secondary school is 5 km away



Future Plans Secondary School

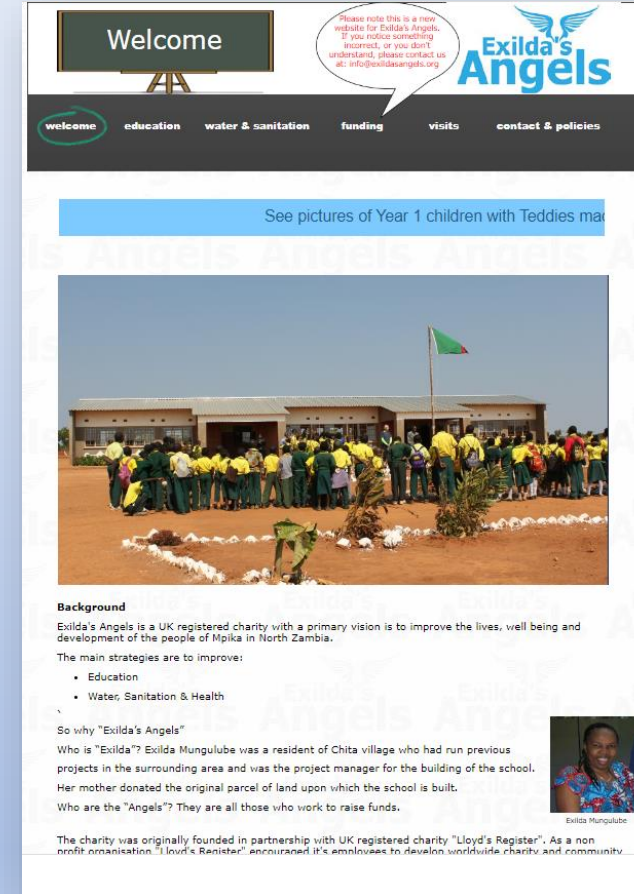


- The land for a secondary school at Chita has been acquired. It is adjacent to the existing school.



Website

- If you want to know more about the project take a look at the website
- www.exildasangels.org
- There are links to the Just Giving page



Geography



Background



Funding



Building



Opening



Links



Growth



Phase 1a



Future



Q&A

News

- If you would like to be kept informed about developments please leave us your contact details on the forms at the back
- Our “Data Protection Policy and Privacy Statement” is shown on on the website and in full by the forms.



Exilda's Angels
 Data Protection Policy & GDPR

The GDPR, the General Data Protection Regulation, has been in operation since May 2017 and is enforceable from 25th May 2018.
 Exning Community Church Hall (ECCH) will comply with the requirements of GDPR in the following way:

- Information about you/ Why we need this data
 - What data will we collect
 - Required: Your name and email address – to keep you informed of events at ECCH (e.g. Exning Village Cinema, Concerts, Plays, new activities etc)
 - If volunteered by you:
 - Your phone number/in case of cancellations
 - Your location (e.g. town)/to enable lift sharing if requested
 - Where and how it is stored;
 - In a Gmail address book "ECCH Events" with password control
 - Who can view it / what they can view;
 - The DPO (Data Protection Officer)/ all information you provided
 - Another person designated by the ECCH Committee/ all information you provided
 - Emails to the distribution list will be sent using "bcc" to prevent your email being shared.
- You may provide data in a number of formats e.g. on paper, on line, etc and may have a copy of this policy by request to the DPO (email DPO@exningcommunitychurchhall.org)
- The DPO (Data Protection Officer) for ECCH is John Saville
- You have the right to:
 - Be removed from the list etc; but this will affect your ability to learn of activities at ECCH.
 - See what information we store about you, by request to the DPO, and we will provide this within one month.
 - Have your data deleted
 - Change details of the data
- The data will not be shared with others.
- We will retain the information until you request its deletion or for a period of 3 months after ECCH ceases to be used for events.

Rev 1.1 2018-03-02

Please complete this form and return it in full to ECCH (mail box). Items * are required, other is voluntary

I agree to the use of my data as outlined above

*Forename		*Surname	
*Email address			
(continued)			
Home Phone		Mobile Phone	
Location (town/village)			

Signed _____ Date _____



Your questions?



Q&A



Geography



Background



Funding



Building



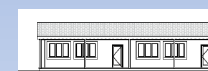
Opening



Links



Growth



Phase Ia



Future

